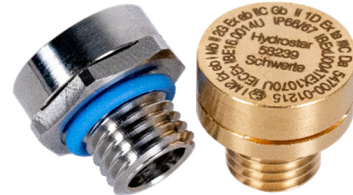


## Pressure equalisation element DAE

### Technical Specifications



### General Information

Air exchange in sealed housings? No Problem!

Our pressure equalisation elements (formerly Gothe & Co. GmbH) have proven themselves reliably worldwide.

High temperatures and adverse environmental influences provide continuous pressure fluctuations in sealed housings - protect your sensitive electronics and improve the lifetime of electronic devices with our pressure equalisation elements.

- ⚡ **Reliable reduction of condensate formation**
- ⚡ **Protection of harmful fluids and particles**

### Special Features

- ⚡ **Flat construction**
- ⚡ **Easy installation (from inside or outside)**
- ⚡ **100% Salt retention capacity**
- ⚡ **Very robust**
- ⚡ **Diverse versions**
- ⚡ **Air passage of up to 400 ml/min**



## Pressure equalisation element DAE

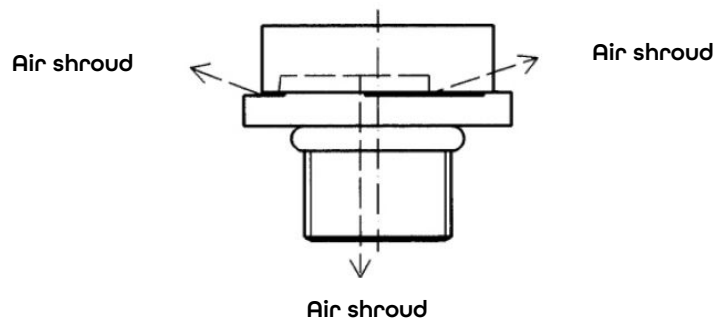
### Technical Specifications



#### Technical Data

- ⚡ **Mounting body/cap** brass (optional nickel-plated, chrome-plated or stainless steel)
- ⚡ **Membrane** ePTFE (oleophobic)
- ⚡ **O-Ring** NBR (optional EPDM, FKM or silicone)
- ⚡ **Water ingress pressure** > 0,6 bar
- ⚡ **Protection class** DIN EN 60529 IP66, IP68 (installed)
- ⚡ **Acceptable temperatures** - 40 °C ... + 80 °C (150°C temporary)
- ⚡ **Salt crystal protection** DIN 50-0-21 100%
- ⚡ **Membrane Features** hydro- and oleophobic, wetting protection by surface tension  $\geq 25\text{mN/m}$

#### Operating principle



#### Manufactured sizes

| ⚡ Thread size | ⚡ Air flow (dp = 70 mbar) | ⚡ SW (external hex/hexagon socket) |
|---------------|---------------------------|------------------------------------|
| M8            | 10 ml/min                 | -/ 4 mm                            |
| M10 x 1       | 10 ml/min                 | 14 mm/ -                           |
| M12 x 1,5     | 65 ml/min                 | 19 mm/ 8 mm                        |
| M16 x 1,5     | 80 ml/min                 | 24 mm/ 8 mm                        |
| M20 x 1,5     | 160 ml/min                | 27 mm/ 12 mm                       |
| M27 x 1,5     | 400 ml/min                | 36 mm/ 24 mm                       |

Additional Pg or pipe thread available.

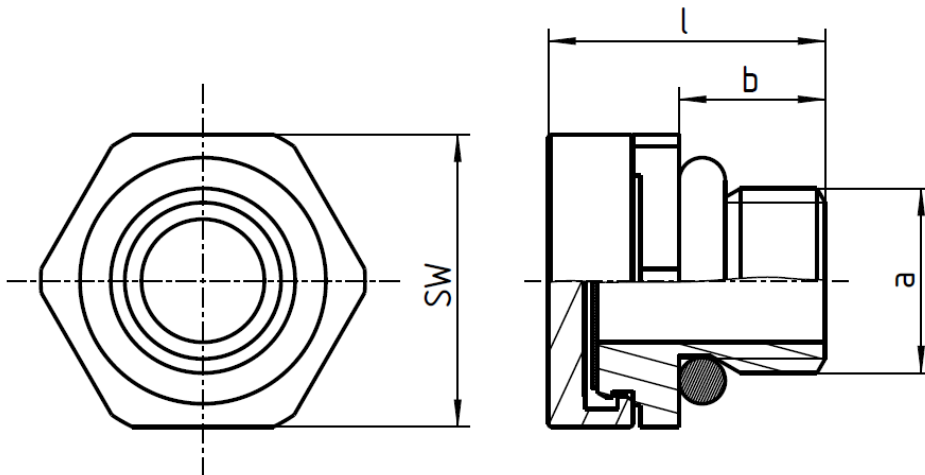


## Pressure equalisation element DAE

### Technical Specifications



Dimensions DAE-AS (picture DAE-AS-1215 on a scale of 2:1)



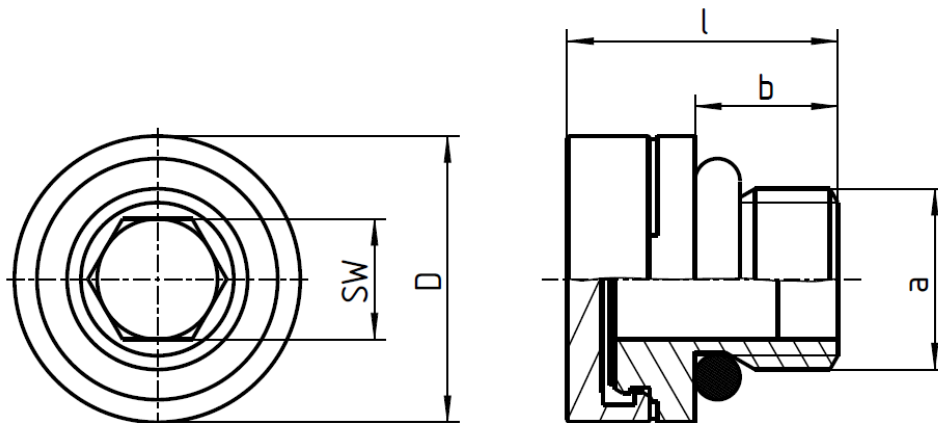
| Item        | a       | b   | l    | SW |
|-------------|---------|-----|------|----|
| DAE-AS-1010 | M10x1   | 5   | 9,7  | 14 |
| DAE-AS-1215 | M12x1,5 | 9,5 | 18   | 19 |
| DAE-AS-1615 | M16x1,5 | 12  | 20,5 | 24 |
| DAE-AS-2015 | M20x1,5 | 12  | 21   | 27 |
| DAE-AS-2715 | M27x1,5 | 15  | 24   | 36 |

## Pressure equalisation element DAE

### Technical Specifications



### Dimensions DAE-IS (picture DAE-IS-1215 on a scale of 2:1)



| Item        | a       | b   | l    | SW | D  |
|-------------|---------|-----|------|----|----|
| DAE-IS-0008 | M8      | 8   | 12,7 | 4  | 14 |
| DAE-IS-1215 | M12x1,5 | 9,5 | 18   | 8  | 19 |
| DAE-IS-1615 | M16x1,5 | 12  | 20,5 | 8  | 24 |
| DAE-IS-2015 | M20x1,5 | 12  | 21   | 12 | 27 |
| DAE-IS-2715 | M27x1,5 | 15  | 24   | 19 | 36 |

## Pressure equalisation element DAE

### Technical Specifications



### Order Information

#### Basic type DAE

**DAE**

-

-

-

-

#### Mounting type

**AS** = External hex

**IS** = Hexagon socket

#### Thread size

**0008** = M8 (only for IS)

**1010** = M10 x 1 (only for AS)

**1215** = M12 x 1,5

**1615** = M16 x 1,5

**2015** = M20 x 1,5

**2715** = M27 x 1,5

#### Material mounting body and cap

**MS** = Brass

**NI** = Brass nickel-plated

**CR** = Brass chrome-plated

**VA** = Stainless steel

#### Material O-Ring

**NB** = NBR

**EP** = EPDM

**FK** = FKM-sealing

**SI** = Silicone

Additional special specifications available on request.

